

CT NO. COUNTY, TEXAS

TRACT "A" 1.133 ACRES

(PLAYGROUND AREA)

DUBOSE ROAD (56.53' R.O.W.)

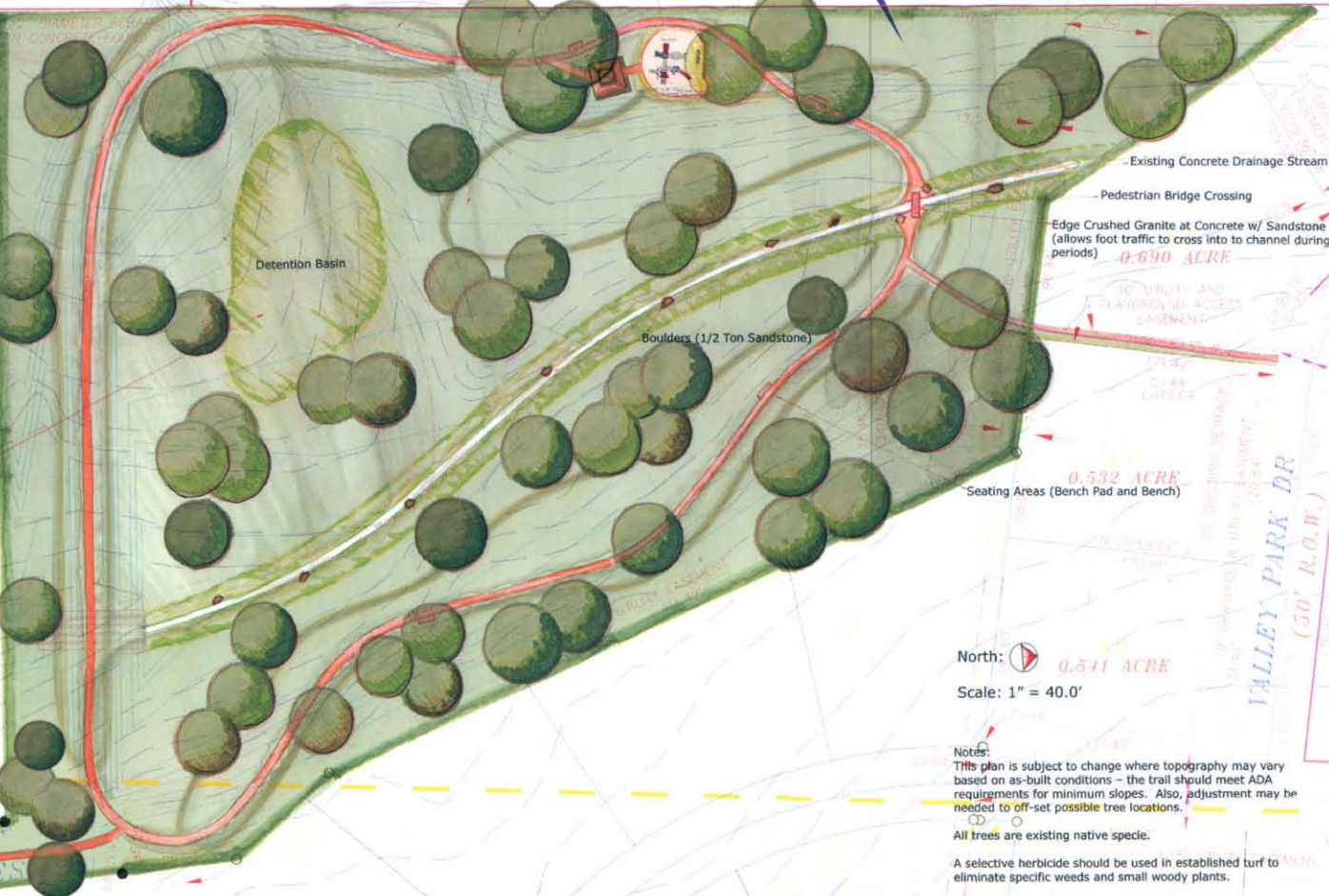
Highly Manicured Zone (turf grass)
Low Mow Zone (native prairie grasses)

Playground (Ages 1 - 12)

6' Crushed Granite Trail

N 14°54'20" E - 307.56'

N 90° 00' 00" E - 100.00'



- Existing Concrete Drainage Stream Bed

- Pedestrian Bridge Crossing

Edge Crushed Granite at Concrete w/ Sandstone Pavers (allows foot traffic to cross into to channel during dry periods) 0.690 ACRE

Detention Basin

Boulders (1/2 Ton Sandstone)

0.532 ACRE Seating Areas (Bench Pad and Bench)

No Mow Zone (wetland prairie grasses)



North: [North Arrow] 0.511 ACRE

Scale: 1" = 40.0'

Notes:
This plan is subject to change where topography may vary based on as-built conditions - the trail should meet ADA requirements for minimum slopes. Also, adjustment may be needed to off-set possible tree locations.

All trees are existing native specie.

A selective herbicide should be used in established turf to eliminate specific weeds and small woody plants.

Drawn by:
Kim Mettenbrink, ASLA, AICP
Park Planner, City of Temple,
Parks and Leisure Services

0.662 ACRE

0.562 AC

N 14°54'20" W - 45.43'

TRACT "C" 1.133 ACRES

S 07°35'50" E - 499.12'

N 90° 00' 00" E - 100.00'

VALLEY PARK DR (50' R.O.W.)